

**TE-D15/TSA-D07  
24 HOURS ANALOG TIMER  
INSTRUCTION MANUAL**

**Instruction Manual:**

This is a 24 hours programmable timer with 15 minutes interval settings and 48 on/off cycles every day, ideal for home security and energy saving applications. See the steps as below:

1. Setting the real-time firstly. Rotate clockwise the dial, make the arrow point to the real-time. E.g.: It is 9:00 am at present. Rotate the dial and make the arrow point to 9:00. (see figure 1).

2. Push the segments outwards for working ON. Each segment represents 15 minutes. E.g.: You want to let the electric apparatus work during 10:15 -11:00. Push three segments outwards between 10:15 and 11:00 (see figure 2).

3. Push down the switch and situate it to the position  $\odot$  (see figure 3).

4. Insert the plug of the electric apparatus in the timer and then connect the timer plug to the main power. Finally the electric apparatus will be worked as set above.

**NOTE:**

- Do not exceed maximum power load specified in the rating label located on the product.
- Situate the switch to the position "I", now the timer is permanently ON, which is not controlled by program.
- It will keep the same program every day unless change.
- Once power off, need reset the present time when reuse it.
- Make sure not to disassembly the timer by yourself.
- Indoor use only.

Dial Present time

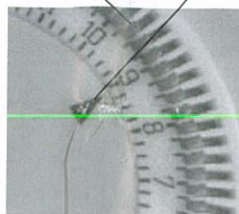


Figure 1

program

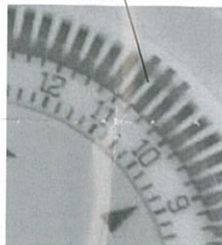


Figure 2

switch

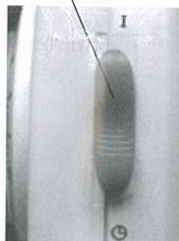


Figure 3