

Dial Indicator

SERIES 3, 4 — Large Dial Face and Long Stroke Type

- Dial gauges with a large-diameter graduation face to ease reading.
- All types come with limit pins and an outer frame clamp as standard.



3109S-10

3058S-19

4046S



(Refer to the page 9 for details.)



3046S



3047S

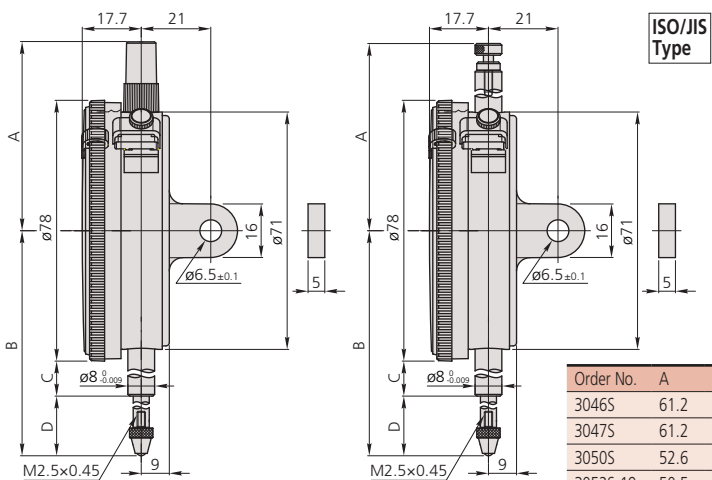


3050S



3052S-19

DIMENSION



Unit: mm

| Order No. | A | B | C | D |
|-----------|-------|-------|------|-------|
| 3046S | 61.2 | 75.5 | 15.9 | 20.6 |
| 3047S | 61.2 | 75.5 | 15.9 | 20.6 |
| 3050S | 52.6 | 94 | 25.9 | 29.1 |
| 3052S-19 | 50.5 | 104.3 | 25.9 | 39.4 |
| 3060S-19 | 120.9 | 202.3 | 73.9 | 89.4 |
| 3062S-19 | 141.9 | 243.3 | 94.9 | 109.4 |
| 3109S-10 | 61.2 | 79.3 | 25.9 | 14.1 |

Note 1: Dimensions of the inch (ANSI/AGD Type) dial indicator partly differ from those of the metric (ISO/JIS Type) indicator.
Note 2: Inch (ANSI/AGD Type) dial indicator is provided with a stem of 3/8" dia. and #4-48UNF thread mount for the contact point.



Schockproof type



w/ damper at lowest rest point



Jeweled bearing type



w/ coaxial revolution counter

SPECIFICATIONS

Metric

ISO/JIS type

| Graduation | Order No. | | Range (range/rev) | Accuracy | Dial reading | Measuring force | | | | | — | — |
|------------|-----------|------------|-------------------|----------|--------------|-----------------|---|---|---|---|---|---|
| | w/ lug | Flat-back | | | | | | | | | | |
| 0.01mm | 3046S | 3046SB | 10mm (1mm) | ±15μm | 0-100 | 1.4N or less | — | — | — | — | — | — |
| 0.01mm | 3047S | 3047SB | 10mm (1mm) | ±15μm | 0-50-0 | 1.4N or less | — | — | — | — | — | — |
| 0.01mm | 3050S | 3050SB | 20mm (1mm) | ±20μm | 0-100 | 2.0N or less | — | ✓ | — | — | — | — |
| 0.01mm | 3052S-19 | 3052SB-19 | 30mm (1mm) | ±25μm | 0-100 | 2.5N or less | ✓ | — | ✓ | ✓ | — | — |
| 0.01mm | 3058S-19 | 3058SB-19 | 50mm (1mm) | ±35μm | 0-100 | 3.0N or less | ✓ | — | ✓ | ✓ | — | — |
| 0.01mm | 3060S-19* | 3060SB-19* | 80mm (1mm) | ±45μm | 0-100 | 3.0N or less | ✓ | — | ✓ | ✓ | — | — |
| 0.01mm | 3062S-19* | 3062SB-19* | 100mm (1mm) | ±50μm | 0-100 | 3.2N or less | ✓ | — | ✓ | ✓ | — | — |
| 0.001mm | 3109S-10 | 3109SB-10 | 1mm (0.2mm) | ±6μm | 0-100-0 | 1.5N or less | ✓ | — | ✓ | — | — | — |
| 0.01mm | 4046S | 4046SB | 10mm (1mm) | ±15μm | 0-100 | 1.4N or less | — | — | — | — | — | — |

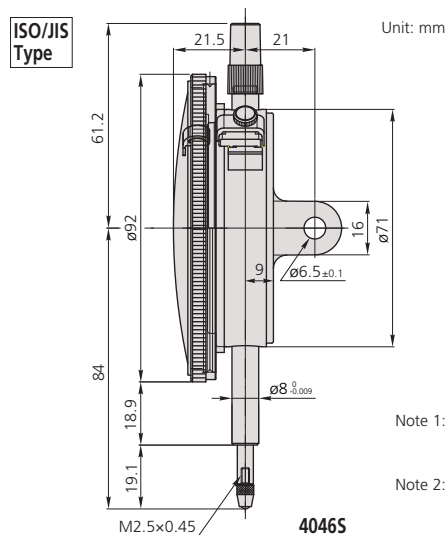
*Use in a vertical position only.

Inch

ANSI/AGD type

| Graduation | Order No. | | Range (range/rev) | Accuracy | Dial reading | Measuring force | | | | | — | — |
|------------|-----------|-----------|-------------------|----------|--------------|-----------------|---|---|---|---|---|---|
| | w/ lug | Flat-back | | | | | | | | | | |
| .001" | 3410S | 3410SB | .25" (.1") | ±.001" | 0-100 | 1.8N or less | — | — | — | — | — | — |
| .001" | 3411S | 3411SB | .25" (.1") | ±.001" | 0-50-0 | 1.8N or less | — | — | — | — | — | — |
| .001" | 3414S | 3414SB | .5" (.1") | ±.001" | 0-100 | 1.8N or less | — | — | — | — | — | — |
| .001" | 3415S | 3415SB | .5" (.1") | ±.001" | 0-50-0 | 1.8N or less | — | — | — | — | — | — |
| .001" | 3416S | 3416SB | 1" (.1") | ±.002" | 0-100 | 1.8N or less | — | — | — | — | — | — |
| .001" | 3417S | 3417SB | 1" (.1") | ±.002" | 0-50-0 | 1.8N or less | — | — | — | — | — | — |
| .001" | 3424S-19 | 3424SB-19 | 2" (.1") | ±.003" | 0-100 | 3.0N or less | ✓ | ✓ | ✓ | — | — | — |
| .001" | 3426S-19 | 3426SB-19 | 3" (.1") | ±.005" | 0-100 | 3.0N or less | ✓ | ✓ | ✓ | — | — | — |
| .001" | 3428S-19 | 3428SB-19 | 4" (.1") | ±.005" | 0-100 | 3.2N or less | ✓ | ✓ | ✓ | — | — | — |
| .001" | 3780S | 3780SB | .125" (.05") | ±.001" | 0-50 | 1.8N or less | — | — | — | — | — | — |
| .001" | 3781S | 3781SB | .125" (.05") | ±.001" | 0-25-0 | 1.8N or less | — | — | — | — | — | — |
| .0005" | 3570S-10 | 3570SB-10 | .075" (.03") | ±.0005" | 0-30 | 1.8N or less | — | ✓ | — | — | — | — |
| .0005" | 3571S-10 | 3571SB-10 | .075" (.03") | ±.0005" | 0-15-0 | 1.8N or less | — | ✓ | — | — | — | — |
| .0001" | 3802S-10 | 3802SB-10 | .025" (.01") | ±.0001" | 0-10 | 2.0N or less | ✓ | ✓ | — | — | — | — |
| .0001" | 3803S-10 | 3803SB-10 | .025" (.01") | ±.0001" | 0-5-0 | 2.0N or less | ✓ | ✓ | — | — | — | — |
| .001" | 4410S | 4410SB | .25" (.1") | ±.001" | 0-100 | 1.8N or less | — | — | — | — | — | — |
| .001" | 4411S | 4411SB | .25" (.1") | ±.001" | 0-50-0 | 1.8N or less | — | — | — | — | — | — |
| .001" | 4887S-19 | 4887SB-19 | 3" (.1") | ±.005" | 0-100 | 3.0N or less | ✓ | ✓ | ✓ | — | — | — |
| .0005" | 4570S-10 | 4570SB-10 | .075" (.03") | ±.0005" | 0-30 | 1.8N or less | — | ✓ | — | — | — | — |
| .0005" | 4571S-10 | 4571SB-10 | .075" (.03") | ±.0005" | 0-15-0 | 1.8N or less | — | ✓ | — | — | — | — |
| .0001" | 4802S-10 | 4802SB-10 | .025" (.01") | ±.0001" | 0-10 | 2.0N or less | ✓ | ✓ | — | — | — | — |
| .0001" | 4803S-10 | 4803SB-10 | .025" (.01") | ±.0001" | 0-5-0 | 2.0N or less | ✓ | ✓ | — | — | — | — |
| .0001" | 4818S-10 | 4818SB-10 | .05" (.02") | ±.0003" | 0-20 | 2.0N or less | ✓ | ✓ | — | — | — | — |

DIMENSION

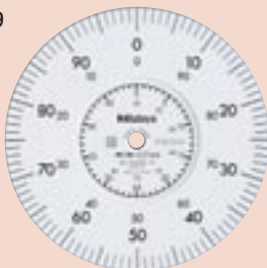


Note 1: Dimensions of the inch (ANSI/AGD Type) dial indicator partly differ from those of the metric (ISO/JIS Type) indicator.

Note 2: Inch (ANSI/AGD Type) dial indicator is provided with a stem of 3/8" dia. and #4-48UNF thread mount for the contact point.



3058S-19



3060S-19



3062S-19



3109S-10



4046S

Optional Accessory

—: Contact points (See page 262.)