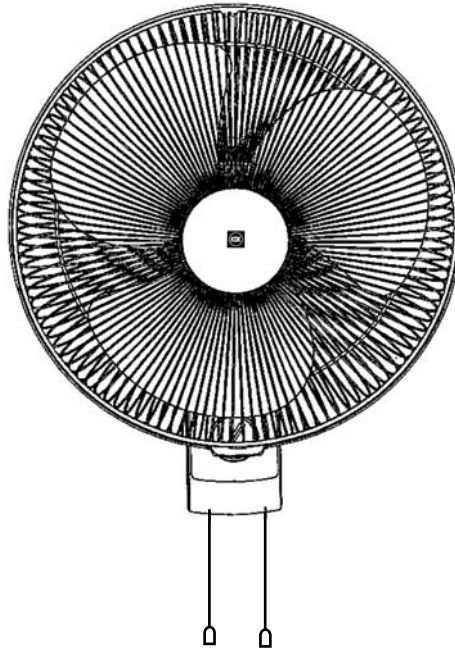


Service Manual

Wall Fans

M30C/M30CS/M40C/M40CS

M30CH/M35CH/M40CH



SPECIFICATION

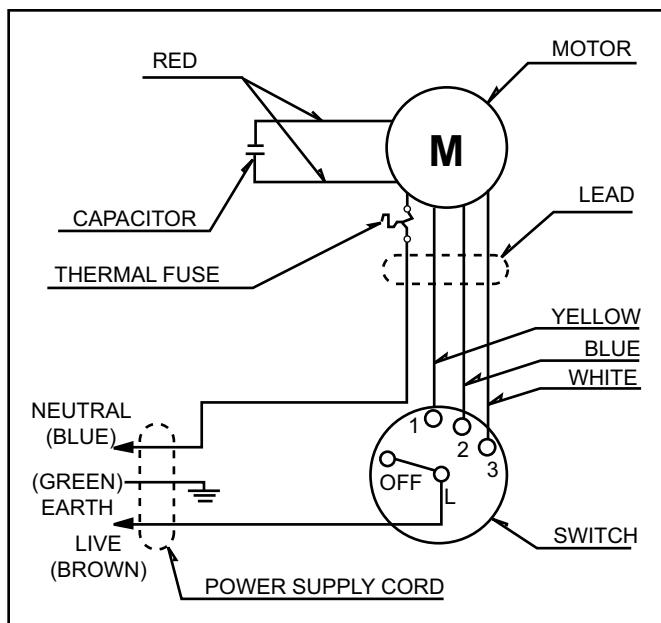
MODEL	AC220V ~ AC240V 50Hz					
	WATTAGE		RPM		AIR VELOCITY	AIR DELIVERY
	Low	High	Low	High	m/min	m ³ /min
M30C/M30CS	25 ~ 31	35 ~ 43	875 ~ 1074	1123 ~ 1373	214	43
M40C/M40CS	38 ~ 47	48 ~ 59	863 ~ 1055	1113 ~ 1360	255	82
M30CH	20 ~ 24	35 ~ 43	833 ~ 1018	1089 ~ 1331	208	41
M35CH	35 ~ 43	50 ~ 59	760 ~ 965	1200 ~ 1260	233	60
M40CH	39 ~ 51	55 ~ 64	770 ~ 870	1150 ~ 1265	247	68

MODEL	AC127V 60Hz					
	WATTAGE		RPM		AIR VELOCITY	AIR DELIVERY
	Low	High	Low	High	m/min	m ³ /min
M30C	30 ~ 36	39 ~ 48	684 ~ 836	1152 ~ 1408	216	59
M40C	48 ~ 54	59 ~ 68	820 ~ 950	1210 ~ 1310	243	71

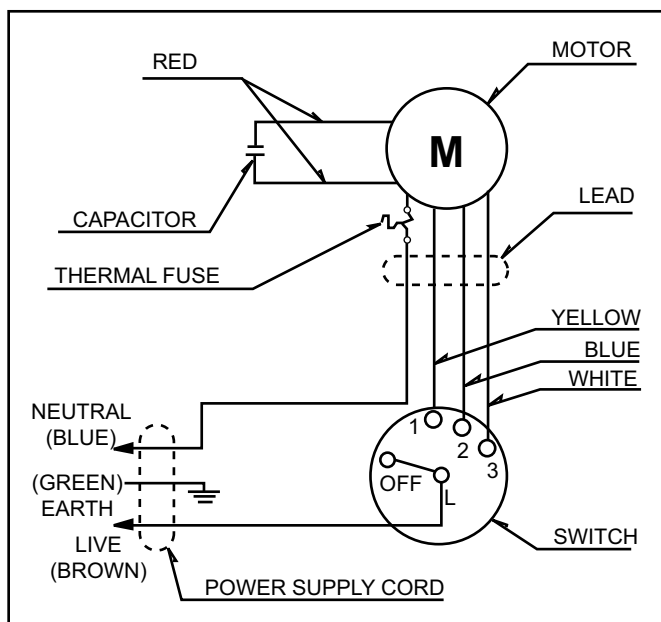
WARNING

This service information is designed for experienced repair technicians only and is not designed for use by the general public. It does not contain warnings or cautions to advise non-technical individuals of potential dangers in attempting to service a product. Products powered by electricity should be serviced or repaired only by experienced professional technicians. Any attempt to service or repair the product or products dealt with in this service information by anyone else could result in serious injury or death.

WIRING DIAGRAM

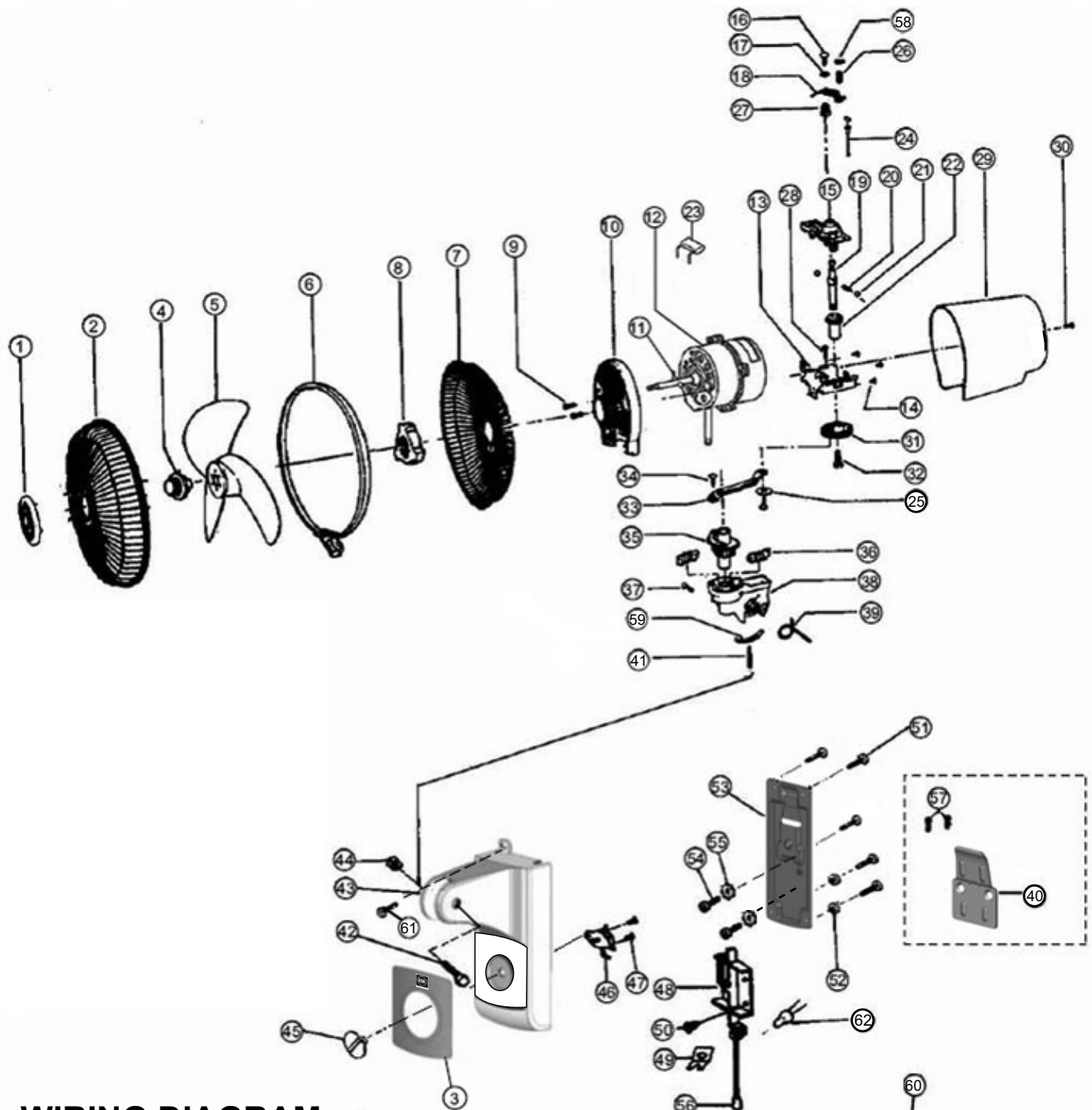


M30C/M40C
M30CS/M40CS

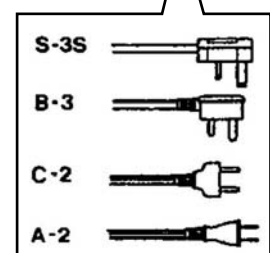
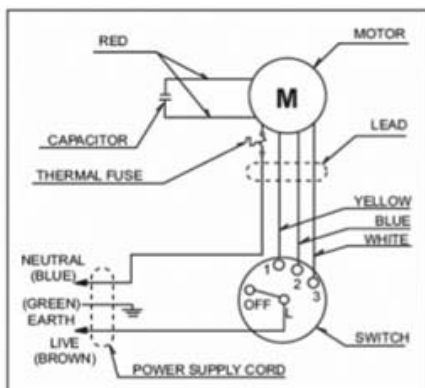


M30CH/M35CH/M40CH

LOCATION OF PARTS M30C/M30CS



WIRING DIAGRAM



REPLACEMENT PART LIST

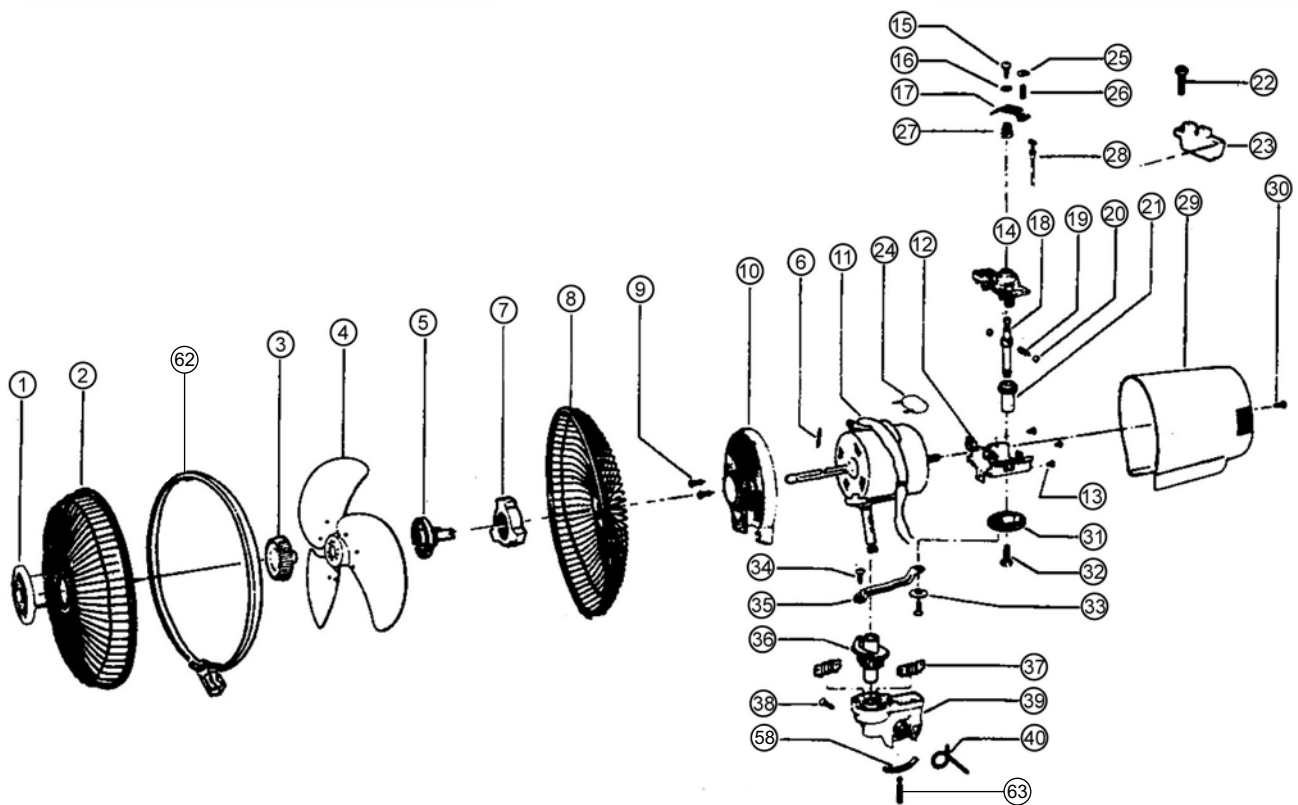
M30C/M30CS

Ref No	Part No	Part Name	Qty	Remark
1	H40BK0920CM	GUARD MARK ASSY	1	GOLD M0028
1	H40AK0920FM	GUARD MARK ASSY	1	WHITE WM002
2	1208V0901CM	FRONT GUARD	1	SILVER SM004
3	M40CH0420AM	PANEL	1	BLUE SB099
3	M40CH0420AMA	PANEL	1	WHITE SN099
4	30C1P0807AM	SPINNER	1	BLUE BZ344
4	30C1P0807AMN	SPINNER	1	GREY N0118
5	C301M0801DM	BLADE	1	BLUE BZ344
5	C301M0801DMN	BLADE	1	GREY N0118
6	C302P0930DM	GUARD RING	1	WHITE WM002
7	300US0902CM	REAR GUARD	1	SILVER SM004
8	D30BM0220C	GUARD SET NUT	1	WHITE BZ054
9	XSB+8FU	MOTOR COVER SCREW	3	
10	1210Z0221PM	FRNT OUTER COVER	1	WHITE WM002
11	C312V0625AM	BLADE SET PIN	1	
12	307US0101CM	MOTOR ASSY	1	200V CLASS
13	1210Z0352GM	GEAR BOX	1	
14	XSB4+S6	GEAR BOX SCREW	3	
15	306UZ0353JM	GEAR BOX COVER	1	
16	403U30507AM	BUSH SET SCREW	1	
17	403UZ0307ZM	CLUTCH BUSH	1	
18	FFE03458302M	SPRING BOARD	1	
19	FFE03038201M	CLUTCH AXLE	1	
20	401UH0331ZM	CLUTCH SPRING	1	
21	FFE05030001M	CLUCH BALL	2	
22	1210Z0309CM	WORM WHEEL	1	
23	MN3000391A	CONDENSER	1	
24	00FLW0142A	FLEXIBLE WIRE ASSY	1	
25	1210Z0508ZM	WASHER	1	
26	FFE03458309M	SPRING	1	
27	401UH0331ZM	CLUTCH SPRING	1	
28	XSB4+8FU	SCREW	1	
29	GA3010320ZM	REAR OUTER COVER	1	WHITE WM002
30	XSB4+8FU	MOTOR COVER SCREW	1	
31	1210Z0310AM	GEAR	1	
32	FFE03209001M	GEAR AXLE ASSEMBLY	1	
33	1210Z0313DM	ROD	1	
34	1210Z0316C	ROD SETTING SCREW	1	
35	FFE05059001M	UPPER KNEEJOINT	1	NATURAL
36	403TP0503EM	KNEEJOINT SPRING	1	

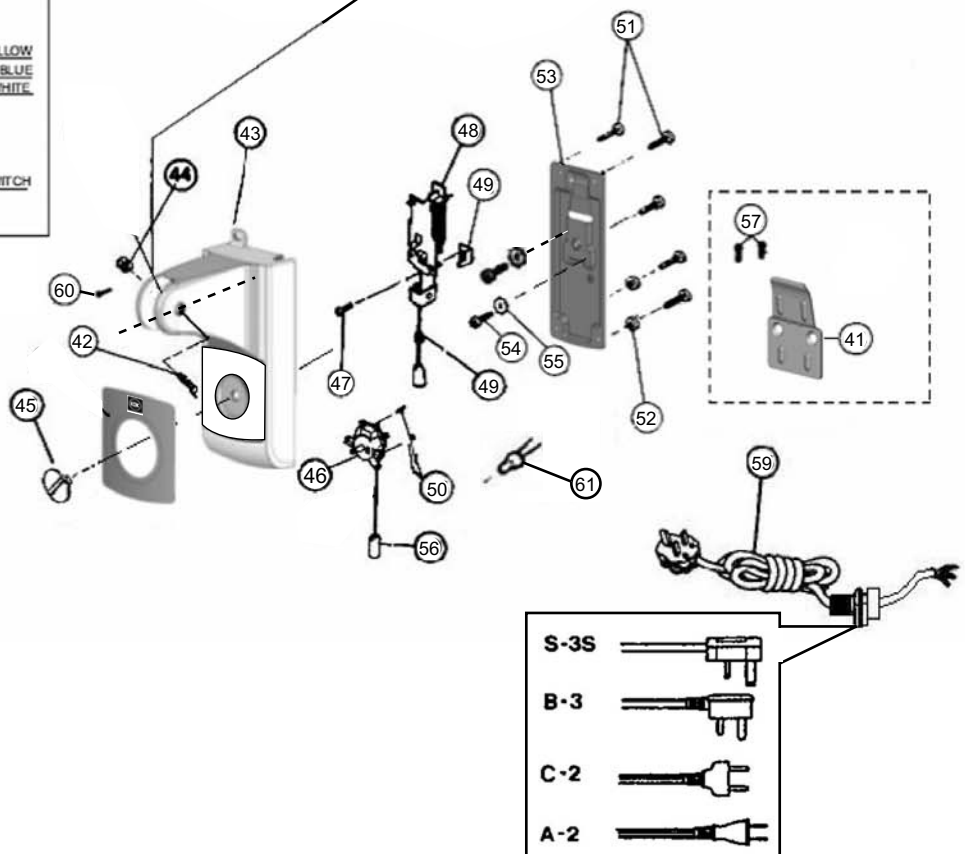
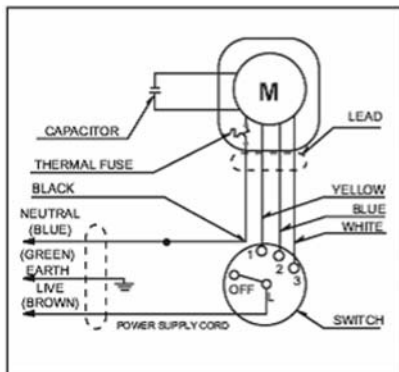
Note : Please code the colour of the part when do part ordering.

[illegible]

LOCATION OF PARTS M40C/M40CS



WIRING DIAGRAM



REPLACEMENT PART LIST

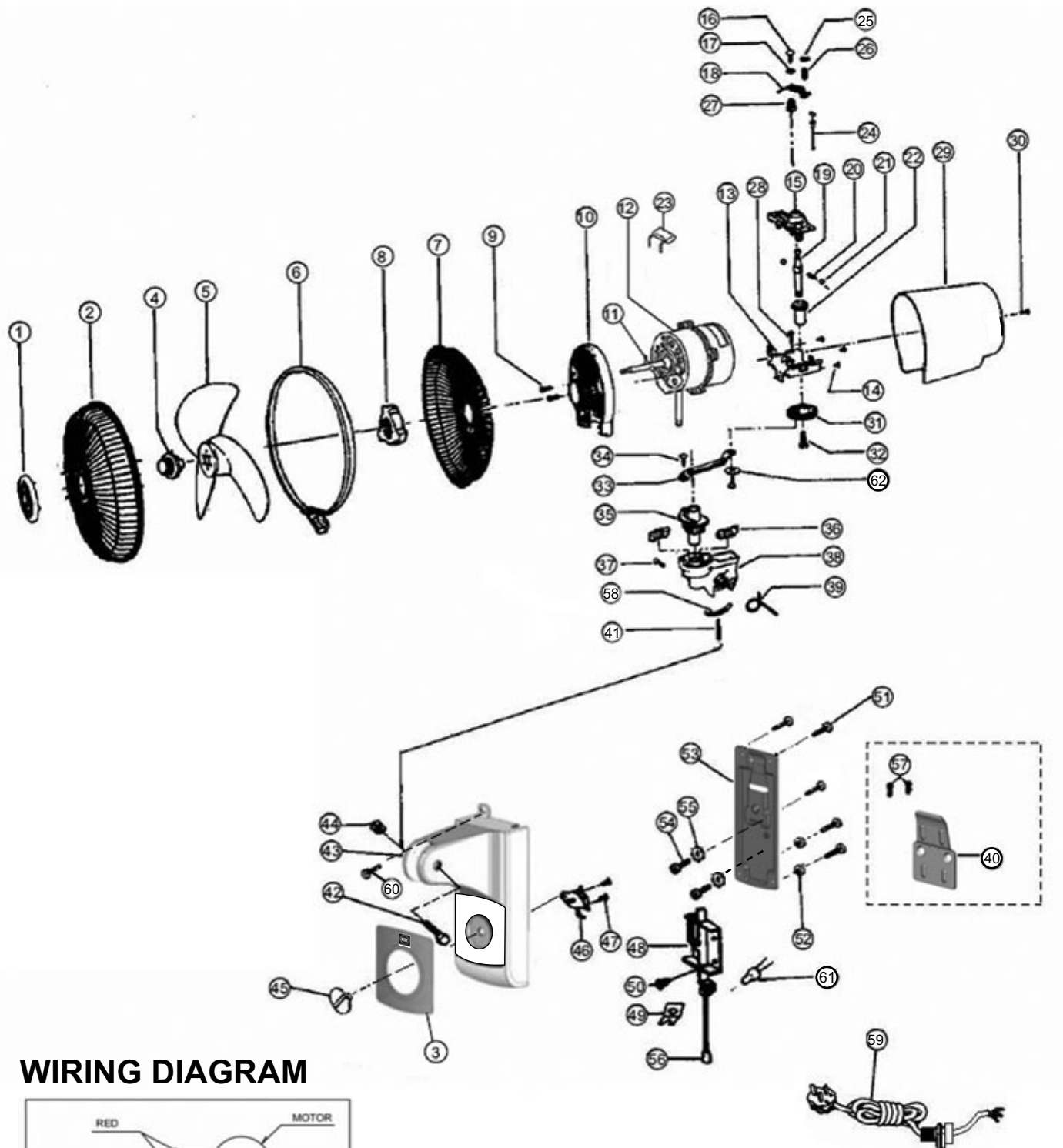
M40C/M40CS

Ref No	Part No	Part Name	Qty	Remark
1	H40AK0920FM	GUARD MARK ASSY	1	WHITE WM002
1	H40BK0920CM	GUARD MARK ASSY	1	GOLD MO028
2	401SH0901AM	FRONT GUARD	1	SILVER SM004
2	401SH0901AMA	FRONT GUARD	1	WHITE BZ054
3	401UH0807ZM	SPINNER	1	BLUE BZ344
3	401UH0807ZMA	SPINNER	1	GREY NO118
3	401UH0807ZMB	SPINNER	1	GOLD YR318
4	404TZ0800DM	BLADE	1	BLUE BZ344
4	404TZ0800DMA	BLADE	1	GREY NO118
4	404TZ0800DMB	BLADE	1	GOLD MO090
5	407XH0802ZM	BLADE BOSS	1	
6	C312V0625AM	BLADE PIN	1	
7	D30BM0220C	GUARD SETTING NUT	1	WHITE BZ054
8	401KH0902AM	REAR GUARD	1	SILVER SM004
8	401KH0902AMA	REAR GUARD	1	WHITE BZ054
9	XSBA+8FU	BIND SCREW MOTOR COVER	3	
10	WK40T0221GM	FRONT OUTER COVER	1	WHITE WM002
11	MU4030111ZM	MOTOR ASSY	1	
12	WK10T0352CM	GEAR BOX	1	
13	XSBA+S6	GEAR BOX SCREW	3	
14	400US0353AM	GEAR BOX COVER	1	
15	403U30507AM	BUSH SET SCREW	1	
16	403U20307ZM	CLUTCH BUSH	1	
17	FFE03458302M	SPRING BOARD	1	
18	FFE03038201M	CLUTCH AXLE	1	
19	401UH0331ZM	CLUTCH SPRING	1	
20	FFE05030001M	CLUTCH BALL	2	
21	1210Z0309CM	WORMWHEEL	1	
22	XSBA+S6	WEIGHT SCREW	1	
23	403UH0355ZM	WEIGHT	1	
24	MN4010392AM	CONDENSER	1	200V CLASS
25	FFE02078302M	WIRE CLIP	1	
26	FFE0358309M	SPRING	1	
27	401UH0331ZM	CLUTCH SPRING	1	
28	00FLW0142A	FLEXIBLE WIRE ASSY	1	
29	358UH0320BM	REAR OUTER COVER	1	WHITE WM002
30	XSBA+8FU	MOTOR COVER SCREW	1	
31	D30BM0310B	GEAR	1	
32	FFE03209001M	GEAR AXLE ASSY	1	
33	FFE03169001M	ROD WASHER	1	
34	403TP0316B	ROD SETTING SCREW	1	
35	WK10T0313BM	ROD	1	
36	FFE05059001M	UPPER KNEEJOINT	1	
37	403TP0503EM	KNEE JOINT SPRING	2	
38	30T1F0437B	YOKE SET SCREW	1	

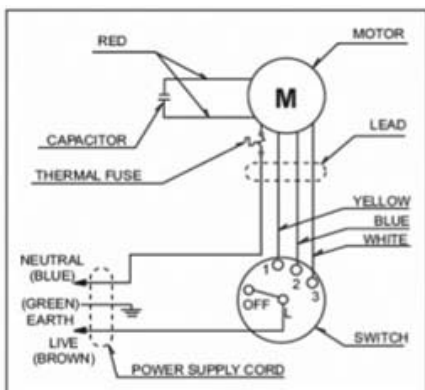
[illegible]

Note : Please code the colour of the part when do part ordering.

LOCATION OF PARTS M30CH



WIRING DIAGRAM



REPLACEMENT PART LIST

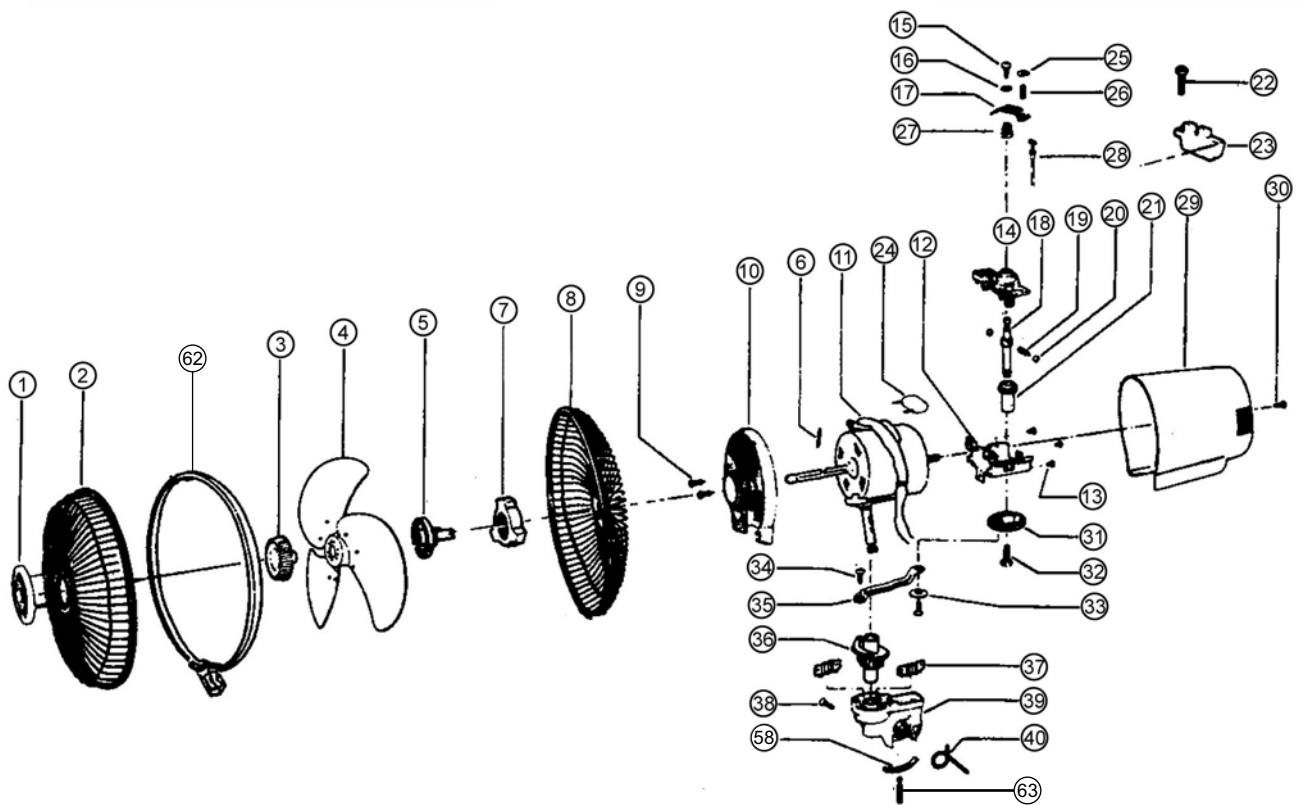
M30CH

Ref No	Part No	Part Name	Qty	Remark
1	H40BK0920CM	GUARD MARK ASSY	1	GOLD M0028
1	H40AK0920FM	GUARD MARK ASSY	1	WHITE WM002
2	1208V0901CM	FRONT GUARD	1	SILVER SM004
3	M40CH0420AM	PANEL	1	BLUE YO099
3	M40CH0420AMA	PANEL	1	WHITE SN099
4	304P0807AM	SPINNER	1	BLUE BZ344
4	304P0807AMA	SPINNER	1	GREY NO118
5	C301M0801DM	BLADE	1	BLUE BZ344
5	C301M0801DMA	BLADE	1	GREY NO118
6	C302P0930DM	GUARD RING	1	WHITE WM002
7	300US0902CM	REAR GUARD	1	SILVER SM004
8	D30BM0220C	GUARD SET NUT	1	WHITE BZ054
9	XSB4+8FU	MOTOR COVER SCREW	3	
10	1210Z0221PM	FRNT OUTER COVER	1	WHITE WM002
11	C312V0625AM	BLADE PIN	1	
12	307UH0102CM	MOTOR ASSY	1	200V CLASS
13	1210Z0352GM	GEAR BOX	1	
14	XSB4+S6	GEAR BOX SCREW	3	
15	306UZ0353JM	GEAR BOX COVER	1	
16	403U30507AM	BUSH SET SCREW	1	
17	403UZ0307ZM	CLUTCH BUSH	1	
18	FFE03458302M	SPRING BOARD	1	
19	FFE03038201M	CLUTCH AXLE	1	
20	401UH0331ZM	CLUTCH SPRING	1	
21	FFE05030001M	CLUTCH BALL	2	
22	1210Z0309ZM	WORM WHEEL	1	
23	MN3000391A	CONDENSER	1	200V CLASS
24	00FLW0142A	FLEXIBLE WIRE ASSY	1	
25	FFE02078302M	WIRE CLIP	1	
26	FFE03458309M	SPRING	1	
27	401UH0331ZM	CLUTCH SPRING	1	
28	XSB4+8FU	SCREW	1	
29	GA3010320ZM	REAR OUTER COVER	1	WHITE WM002
30	XSB4+8FU	MOTOR COVER SCREW	1	
31	1210Z0310AM	GEAR	1	
32	FFE03209001M	GEAR AXLE ASSY	1	
33	1210Z0313DM	ROD	1	
34	1210Z0316C	ROD SETTING SCREW	1	
35	FFE05059001M	UPPER KNEEJOINT	1	
36	403TP0503EM	KNEEJOINT SPRING	1	

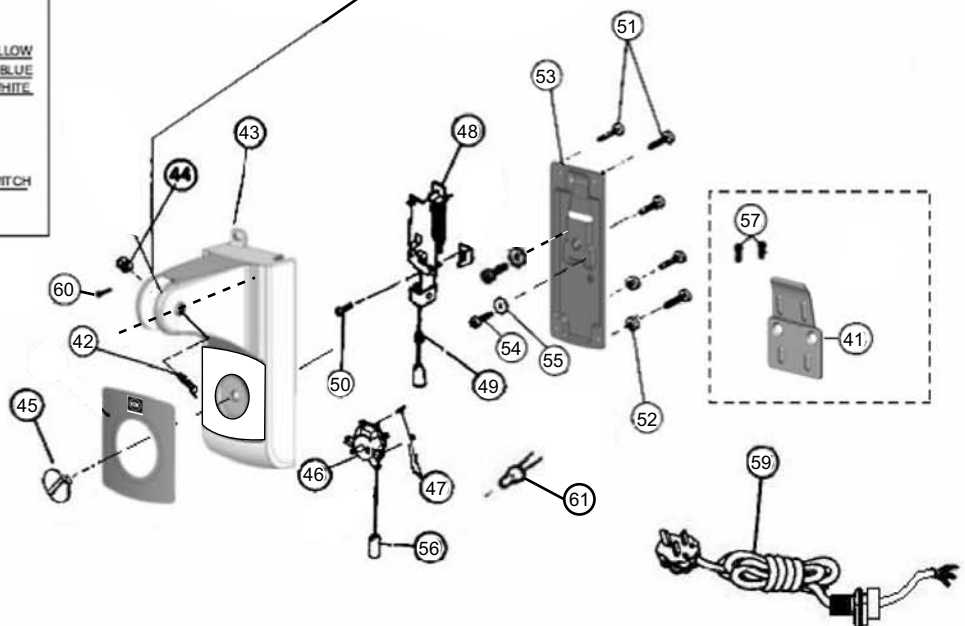
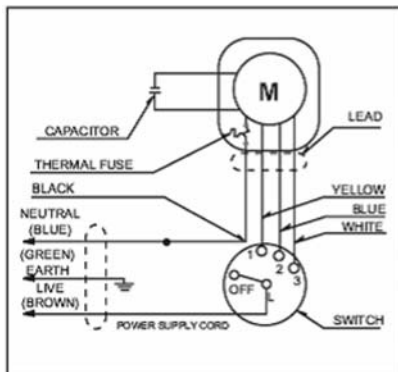
Note : Please code the colour of the part when do part ordering.

[illegible]

LOCATION OF PARTS M35CH



WIRING DIAGRAM



REPLACEMENT PART LIST

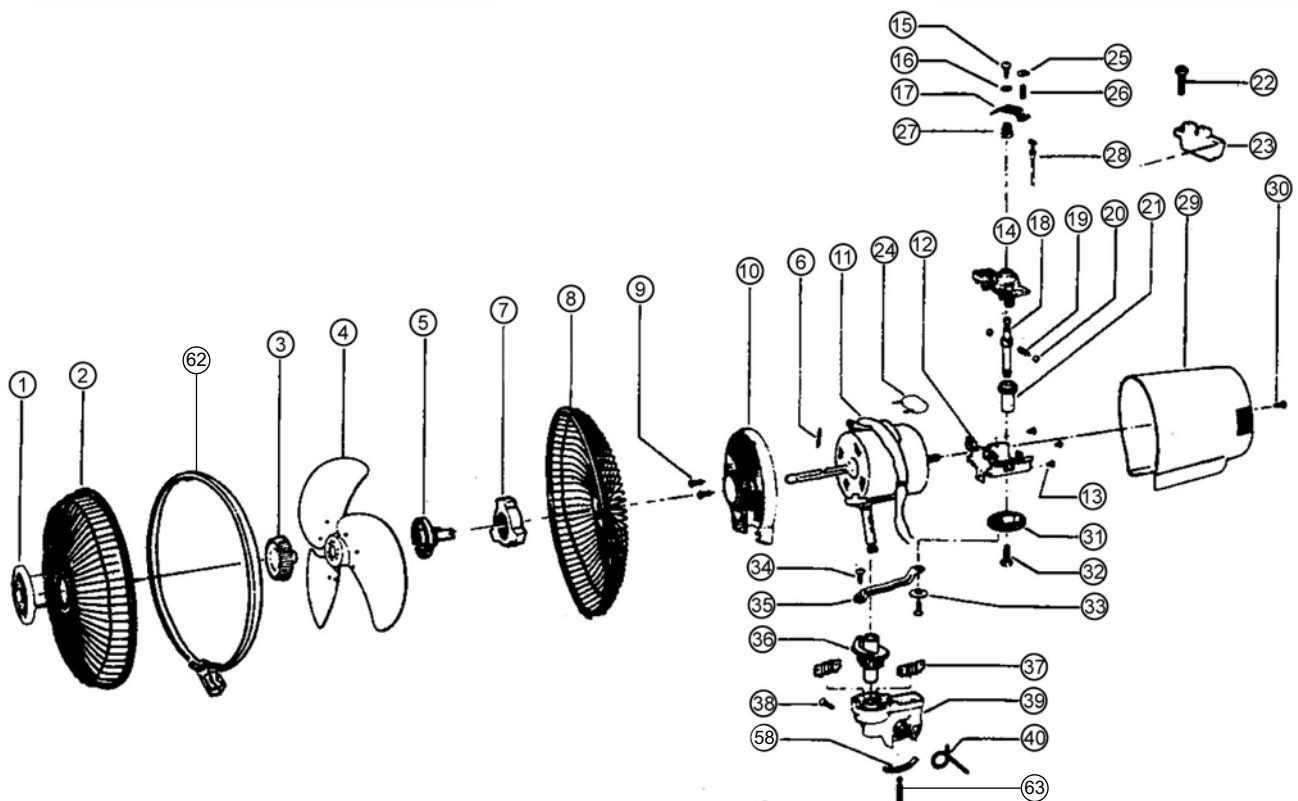
M35CH

Ref No	Part No	Part Name	Qty	Remark
1	H40BK0920CM	GUARD MARK ASSY	1	GOLD M0028
1	H40AK0920FM	GUARD MARK ASSY	1	WHITE WM002
2	358UH0901ZM	FRONT GUARD	1	SILVER SM004
3	401UH0807ZM	SPINNER	1	BLUE BZ344
3	30C1P0807AMA	SPINNER	1	GREY NO118
4	353TH0801AM	BLADE	1	BLUE BZ344
4	353TH0801AMA	BLADE	1	GREY NO118
5	407XH0802ZM	BLADE BOSS	1	
6	1210Z0814ZM	BLADE SET PIN	1	
7	D30BM0220C	GUARD SET NUT	1	WHITE BZ054
8	K351P0902AM	REAR GUARD	1	SILVER SM004
9	XSB4+8FU	MOTOR COVER SCREW	3	
10	WK40T0221GM	FRONT OUTER COVER	1	WHITE WM002
11	MU4030111ZM	MOTOR ASSY	1	200V CLASS
12	WK40T0352CM	GEAR BOX	1	
13	XSB4+S6	GEAR BOX SCREW	3	
14	400US0353AM	GEAR BOX COVER	1	
15	403U30507AM	BUSH SET SCREW	1	
16	403UZ0307ZM	CLUTCH BUSH	1	
17	FFE03458302M	SPRING BOARD	1	
18	FFE03038201M	CLUTCH AXLE	1	
19	401UH0331ZM	CLUTCH SPRING	1	
20	FFE05030001M	CLUTCH BALL	2	
21	1210Z0309ZM	WORM WHEEL	1	
22	XSB4+S6	WEIGHT SCREW	1	
23	403UH0355ZM	WEIGHT	1	
24	MN3010392AM	CONDENSOR	1	200V CLASS
25	FFE02078302M	WIRE CLIP	1	
26	FFE03458309M	SPRING	1	
27	401UH0331ZM	CLUTCH SPRING	1	
28	00FLW0142A	FLEXIBLE WIRE ASSY	1	
29	358UH0320BM	REAR OUTER COVER	1	WHITE WM002
30	XSB4+8FU	MOTOR COVER SCREW	1	
31	D30BM0310B	GEAR	1	
32	FFE03209001M	GEAR AXLE ASSY	1	
33	1210Z0508ZM	ROD WASHER	1	
34	403TP0316B	ROD SETTING SCREW	1	
35	WK40T0313BM	ROD	1	
36	FFE05059001M	UPPER KNEEJOINT	1	
37	403TP0503EM	KNEE JOINT SPRING	1	
38	30T1F0437B	YOKE SET SCREW	1	
39	KC40A0501B	KNEEJOINT	1	WHITE WM002

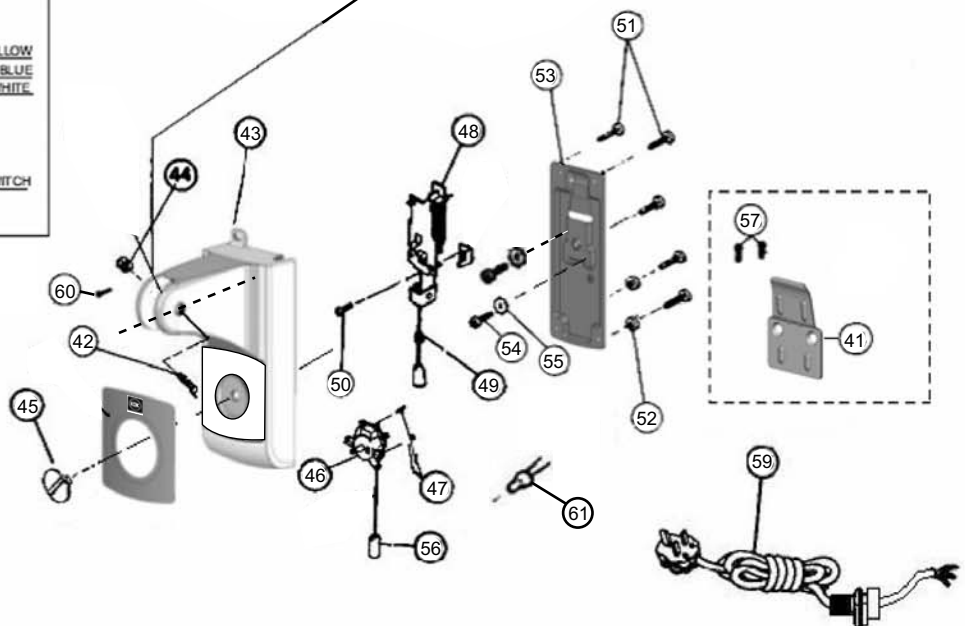
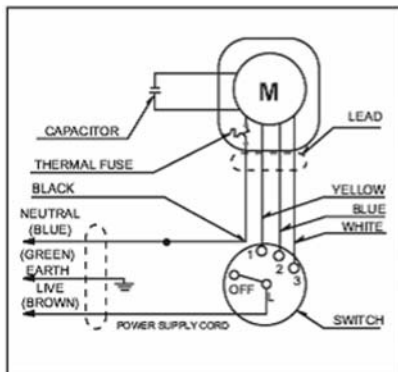
[illegible]

Note : Please code the colour of the part when do part ordering.

LOCATION OF PARTS M40CH



WIRING DIAGRAM



REPLACEMENT PART LIST

M40CH

Ref No	Part No	Part Name	Qty	Remark
1	H40BK0920CM	GUARD MARK ASSY	1	GOLD M0028
1	H40AK0920FM	GUARD MARK ASSY	1	WHITE WM002
2	401SH0901AM	FRONT GUARD	1	SILVER SM004
3	401UH0807ZM	SPINNER	1	BLUE BZ344
3	401UH0807ZMA	SPINNER	1	GREY NO118
4	404TZ0800DM	BLADE	1	BLUE BZ344
4	404TZ0800DMA	BLADE	1	GREY NO118
5	407XH0802ZM	BLADE BOSS	1	
6	FFE0807701M	BLADE PIN	1	
7	D30BM0220CA	GUARD SET NUT	1	WHITE BZ054
8	401KH0902AM	REAR GUARD	1	SILVER SM004
9	XSB4+8FU	BIND SCREW MOTOR COVER	3	
10	WK40T0221GM	FRONT OUTER COVER	1	WHITE WM002
11	MU4030111ZM	MOTOR ASSY	1	200V CLASS
12	WK40T0352CM	GEAR BOX	1	
13	XSB4+S6	GEAR BOX SCREW	3	
14	400US0353AM	GEAR BOX COVER	1	
15	1210Z0315DM	BUSH SET SCREW	1	
16	403UZ0307ZM	CLUTCH BUSH	1	
17	FFE03458302M	SPRING BOARD	1	
18	FFE03038201M	CLUTCH AXLE	1	
19	401UH0331ZM	CLUTCH SPRING	1	
20	FFE05030001M	CLUTCH BALL	2	
21	1210Z0309CM	WORM WHEEL	1	
22	XSB4+S6	WEIGHT SCREW	1	
23	403UH0355ZM	WEIGHT	1	
24	MN4010392AM	CONDENSOR	1	200V CLASS
25	FFE02078302M	WIRE CLIP	1	
26	FFE03458309M	SPRING	1	
27	401UH0331ZM	CLUTCH SPRING	1	
28	00FLW0142A	FLEXIBLE WIRE ASSY	1	
29	358UH0320BM	REAR OUTER COVER	1	WHITE WM002
30	XSB4+8FU	MOTOR COVER SCREW	1	
31	D30BM0310B	GEAR	1	
32	FFE03209001M	GEAR AXLE ASSY	1	
33	FFE03169001M	ROD WASHER	1	
34	403TP0316B	ROD SETTING SCREW	1	
35	WK40T0313BM	ROD	1	
36	FFE05059001M	UPPER KNEEJOINT	1	
37	403TP0503EM	KNEE JOINT SPRING	1	
38	30T1F0437B	YOKE SET SCREW	1	
39	KC40A0501B	KNEEJOINT	1	WHITE WM002

Note : Please code the colour of the part when do part ordering.

[illegible]

PACKING LIST

MODEL : M30C/M30CS/M40C/M40CS

	Part No.	Part Name	Qty	Remarks
	M30CZ8801ZM	Carton Box	1	
	M30CS8801ZM	Carton Box	1	
	M40CZ8801ZM	Carton Box	1	
	M40CS8801ZM	Carton Box	1	
	307UH8060ZM	E.P.S Foam	1	30cm
	MU4038060ZM	E.P.S Foam	1	40cm
	M40CH9021ZM	Instruction Manual	1	

MODEL : M30CH/M35CH/M40CH

	Part No.	Part Name	Qty	Remarks
	M30CH8801ZM	Carton Box	1	
	M35CH8801ZM	Carton Box	1	
	M40CH8801ZM	Carton Box	1	
	307UH8060ZM	E.P.S Foam	1	30cm
	358UH8060ZM	Pack	1	35cm
	MU4038060ZM	E.P.S Foam	1	40cm
	M40CH9021ZM	Instruction Manual	1	